



## Your Multitasking Assistant

**CarryBot: The World's First Logistics Robot Designed to Revolutionize Micro-Fulfillment Centers.**

Powered by advanced **VSLAM+ technology**, CarryBot instantly adapts to ever-changing environments without the need for markers or structural modifications.

Equipped with state-of-the-art systems, including **LiDAR, depth cameras, and anti-collision sensors**. It meets the highest standards required in micro-fulfillment centers.

With **CarryBot**, transform your logistics into a true driver of performance and innovation.

## Key Benefits

### Suspension System

Stable operation in various harsh environments such as uneven and greasy floors.

### Microphone and speaker

6 microphone arrays.  
Answer questions accurately, even in noisy environments.

### 360° Smart Sensors

Built-in RGBD cameras, small obstacles can be detected quickly and accurately.

### Automatic Recharging

Once each task is completed, CarryBot returns to the charging station, waiting for the next task.

### High Definition Video

Displays predefined ads or promotions when detecting a human face.

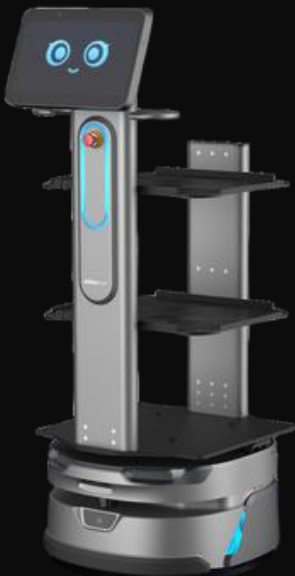
### Load Capacity

Capable of carrying loads of up to 100kg.



# Product Characteristics

<b>Size (L*W*H)</b>	558×525×1375 (mm)
<b>Weight</b>	60kg
<b>Autonomy</b>	12h
<b>Charging time</b>	4.5h
<b>Maximum Load Weight</b>	100kg
<b>Screen Size</b>	14-inch, 1080FHD
<b>Without Marker</b>	V-SLAM
<b>Hardware</b>	Qualcomm 8-core chip + industrial-grade MCU
<b>Navigation Sensor</b>	Lidar × 1 + depth vision sensor × 3 + fisheye camera × 1 + infrared camera × 1 + odometer + inertial measurement unit × 1
<b>Microphone Array</b>	Rows of 6 microphones, 360° sound source positioning, 5m sound range
<b>Operating System</b>	Android 9
<b>Supported Networks</b>	4G supports TDD-LTE, FDD-LTE WiFi supports 2.4G/5G



**CarryBot 2**



**CarryBot 3**



**CarryBot 1**

## Custom "Fisheye" Camera

Uses a markerless deployment approach to meet the deployment requirements of large areas and high ceiling environments.

## 14-inch 1080P screen

Large 14-inch screen with high definition resolution.

## Strong and stable chassis

High practicability due to the quasi-circular design of the chassis.

It can adapt to various complex terrain environments thanks to the adoption of the independent suspension system.

## 8-core Qualcomm Snapdragon chip

World's first robot on Qualcomm platform with Snapdragon 845 chipset, achieving a score of 265,000 on Antutu benchmark, making it one of the most powerful Android SOC chips with industry-leading performance.

## High payloads

It can effortlessly transport bulk goods, heavy components and bulky stock items. Its net payload can reach 100 kg.

Flexible transport accessories that adapt to a wide range of delivery tasks for various items.

## Navigation cameras and sensors

Built-in 3D omnidirectional obstacle avoidance sensor + 240° Lidar enables safer deliveries.

The RGBD\*3 depth camera can detect small obstacles quickly and accurately.